



District of Lakeland Spring Newsletter



We dream of green in the District of Lakeland!

Hey it's spring on March 20th, which means warmer weather, budding flowers, and green grass returning to the District of Lakeland! What? -29°C? Oh...

While we wait patiently for warm sandy beaches, we have a few reminders:

- Upcoming Building Project? Be sure to read our [Development Information](#). Call us at the office or email development@lakeland521.ca to start on your building or development permits. Don't risk a fine or stop-work order!

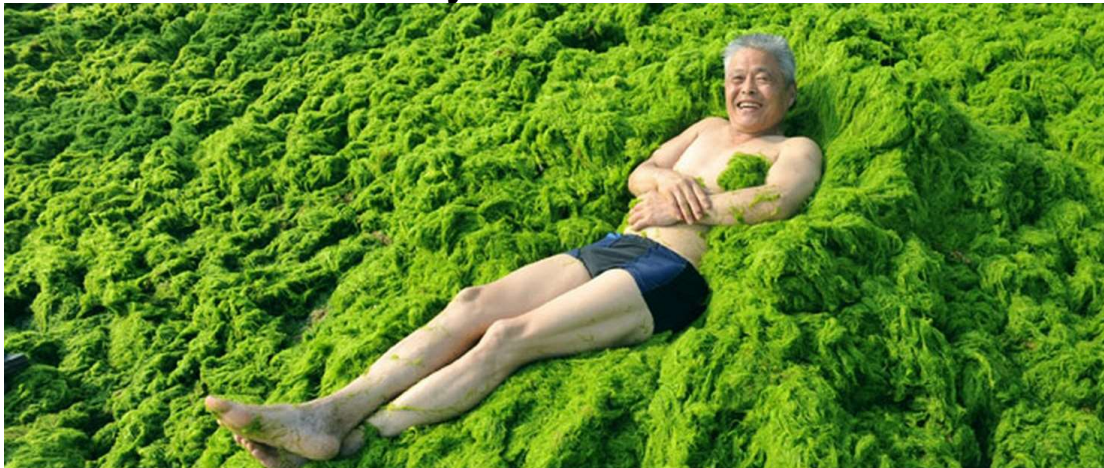
ATTENTION DOCK OWNERS ON EMMA AND CHRISTOPHER



HAVE YOU TRADED IN YOUR DOCK PLATE?

- If you still have an older four-digit dock plate, please be sure to bring it and trade it for a new one **before** you put your dock out on the water.
- With snow still on the ground, Public Works reminds ratepayers to bring in your garbage bins after pickup on Monday. We're still expecting a few instances of heavy snowfall before the winter is done.
- In addition, it won't be long before bears start coming out of hibernation. Please be sure to place your bin out as close to Monday morning as possible. If you are not going to be here, we have bear-proof bins available in several locations. Find your nearest bin [on our website](#). Store your bin in a garage or shed until pickup day, if possible.

You and Lake Water Quality



"I hear algae is really good for your pores."

Our Environmental Advisory Committee (EAC) takes the quality of our lakes seriously. Clean healthy lakes support human health, the aquatic ecosystem and the economy. EAC works to educate the public and take preventative measures to keep our lakes healthy for many years to come.

You may have observed certain changes in the lake from year to year:

- **Tea Coloured Waters** are caused by decaying organic matters such as leaves, bark and aquatic plants and is more prevalent in high precipitation years when runoff out of the surrounding forest is high.
- **Increased Weed and Algae** growth which can be caused by added nutrients from runoff, fertilizer use, septic sources, shoreline alteration, boat activity and wind especially in shallow areas.

- **Swimmer's Itch** is an allergic reaction to parasites introduced to the water through bird feces so it can be reduced by not feeding birds on your beach or dock.

For more information about EAC, their current projects, and how you can get involved, please [visit our website](#).

2019 Taxes

The tax levy won't be done until summer, and penalties are not applied until August 31st, 2019. **However**, if paid by the end of this month, you get a 4% discount on the municipal portion! Give the office a call to find out the amount based on last year's tax levy. Taxes are payable by cheque, debit card, cash, e-transfer, or through your bank with BMO, Scotiabank, and any Credit Union.

Transfer Station

The transfer station's hours will be changing on **April 30th**.

The summer hours are:

Monday.....	8am-4pm
Tuesday & Wednesday.....	Closed
Thursday.....	8am-4pm
Friday.....	8am-4pm
Saturday.....	8am-4pm
Sunday.....	8am-4pm

Do We Have Your Current Mailing Address?

If you did not receive your tax notice in the summer of 2018 or you have moved recently, give us a call to be sure your address is up to date in our files. You can also add your phone number for emergency situations. All information given is kept private.

District of Lakeland No. 521
 office@lakeland521.ca
 Phone: 306-982-2010
 Fax: 206-982-2589
 LDPS: 306-982-4466
 Development: 306-982-2039

Office located West of the fire hall in the Village of Christopher Lake. Open Monday to Friday 8AM-4:30PM.



Mailing Address
 Box 27
 Christopher Lake SK
 S0J 0N0

Want to change how you receive these emails?
 You can [update your preferences](#) or [unsubscribe from this list](#).