



The Lakeland Latest: Autumn 2023

District of Lakeland No. 521
Christopher Lake, SK S0J 0N0
lakeland521.ca

email us! office@lakeland521.ca
phone us! 306 982-2010
mail us! PO Box 27
visit us! 48 Main Street
facebook! District of Lakeland



Transfer Station is Open
9am-5pm, 7 days/wk

Winter Hours
November 1st - April 30th
Mon-Sat 9am-4pm.
Call the Office for directions.

Fun Facts:
Lakefront Properties



FALL CLEANUP TIPS:

- No raking, no cutting! (that was how we gardened in the past, before we knew how to work with nature better) Leave your plants and fallen leaves in their natural state over winter. They provide a safe haven for beneficial insects like bees and ladybugs to hibernate.
- Do not empty your hot tub into the lake!! That grey water directly contributes to algae growth in our lakes.

A MESSAGE FROM THE

**ENVIRONMENTAL
ADVISORY COMMITTEE**

Upcoming Council Meetings:

Wednesday October 11
Wednesday November 15
Wednesday December 13

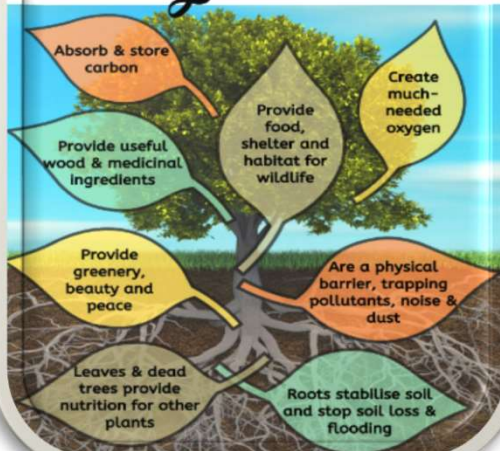
The Public is
welcome to attend!

HOW DO
LEAVES
GET
FROM
PLACE
TO
PLACE?

WITH
AUTUMN-
MOBILES

Reminder!
If it's not on
your property,
you can't
add (to) it,
remove it,
cut it,
plant it,
or alter it.

*Why are trees
important?*



**Lakeland District
Protective Services**

scan:



phone: 306 982-4466
online: lakeland521.ca

EMMA LAKE
@BirchBay

YEARLY RAINFALL

2014: 359mm / 14.2"
2015: 302mm / 11.9"
2016: 268mm / 10.5"
2017: 251mm / 9.9"
2018: 284mm / 11.2"
2019: 267mm / 10.5"
2020: 347mm / 13.7"
2021: 225mm / 8.8"
2022: 277mm / 10.9"
2023*: 343mm / 13.5"

*as of Sep 15
@Wayne Hyde

Property Taxes

**Starting
September 1st,
a 1% penalty
will apply to each
month for any
outstanding
balances.**